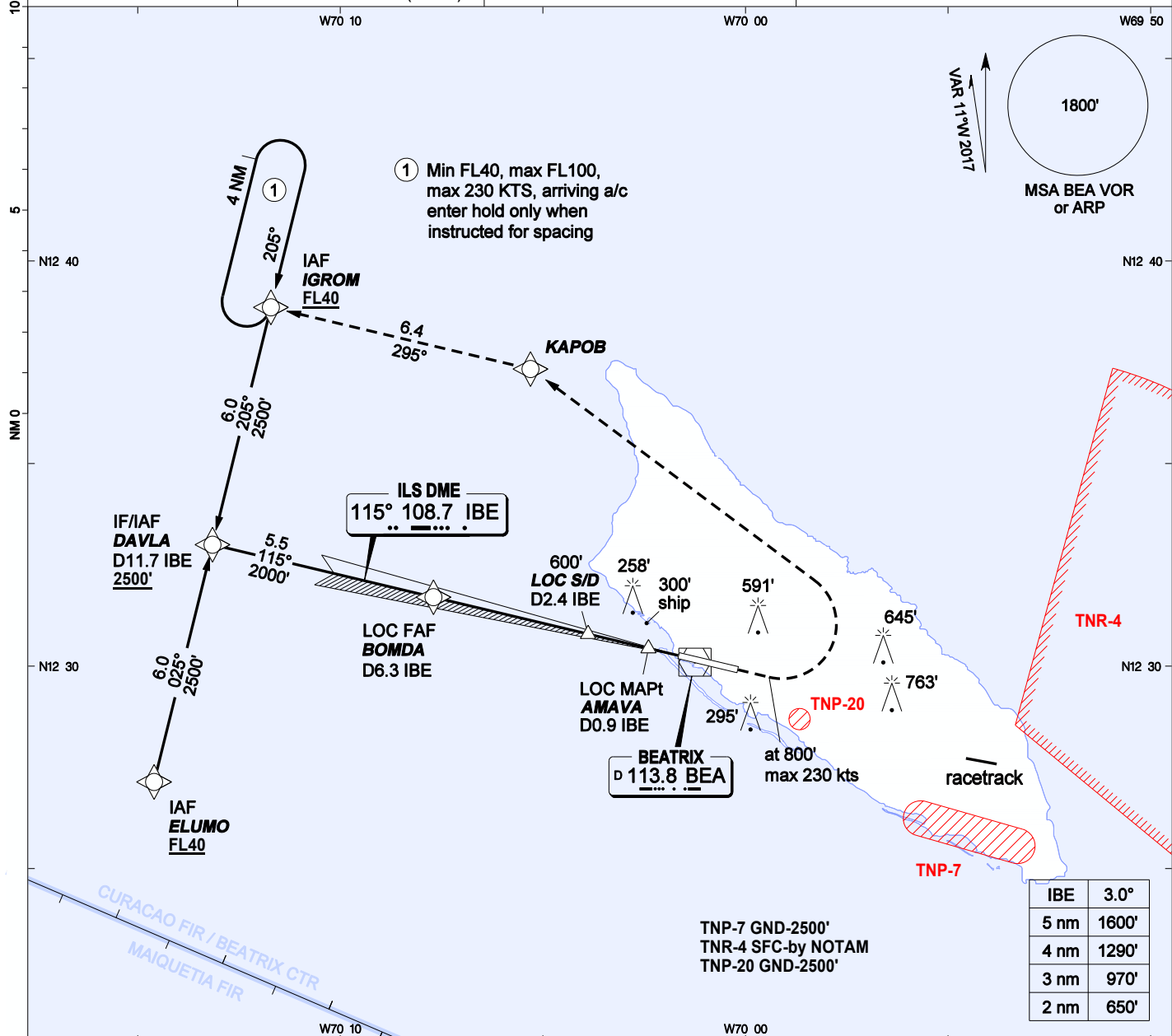
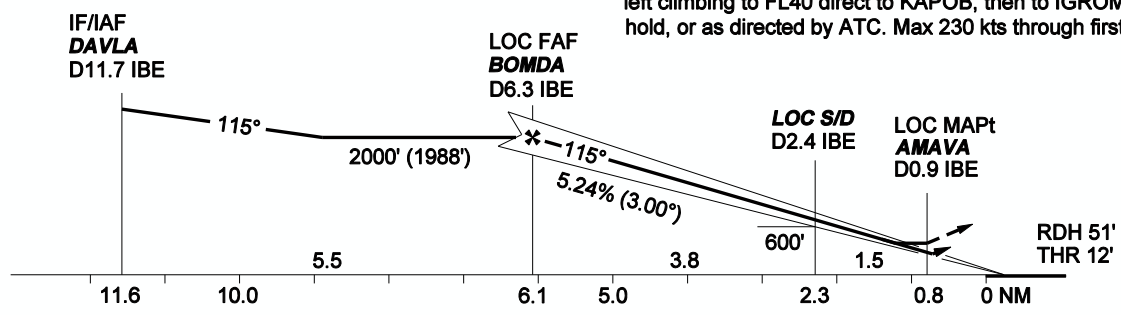


AIP DUTCH CARIBBEAN

INSTRUMENT APPROACH CHART - ICAO	AD ELEVATION: 62'	BEATRIX:			ILS Z RWY 11
	TRANS LEVEL: FL 40	APP 120.9	TWR 118.0	REINA BEATRIX INT'L (TNCA)	
	TRANS ALT: 2500' (2438')	APRON 121.6	ATIS 132.1	ARUBA	



MISSED APPR: Climb on extended centerline to 800', then turn left climbing to FL40 direct to KAPOB, then to IGROM and hold, or as directed by ATC. Max 230 kts through first turn.



OCA(H)	A	B	C	D	GROUNDSPEED - DESCENT RATE						
					KNOTS	70	90	100	120	140	160
ILS CAT 1	233' (221')	245' (233')	253' (241')	263' (251')	FT/MIN	372	478	531	637	743	849
LOC (GS out)	440' (428')	440' (428')	440' (428')	440' (428')	THR11	N12 30	15.50	W070 01	38.98		
CIRCLING	890' (828')	890' (828')	1160' (1098')	1160' (1098')	GS/DME	N12 30	09.50	W070 01	30.25		

- GNSS required.
- Bearings are magnetic, altitudes, elevations and heights in feet and distance in NM. Straight-in heights are relative to THR elevation, other heights are relative to AD elevation.
- BEA DME may be used if IBE DME inoperative: add 0.3 nm.

AMAVA	N12 30	26.16	W070 02	23.69
BOMDA	N12 31	41.97	W070 07	41.98
DAVLA	N12 32	59.81	W070 13	09.24
ELUMO	N12 27	08.32	W070 14	35.70
IGROM	N12 38	51.29	W070 11	42.72
KAPOB	N12 37	19.89	W070 05	18.39
S/D D2.4 IBE	N12 30	47.47	W070 03	53.10

CHANGES: editorial (altitude restrictions added at ELUMO, DAVLA and IGROM).